

INSTALLATION INSTRUCTIONS FOR M-PM54 PET FOUNTAIN

Important: Read all instructions and refer to local codes prior to installation.

- It is recommended to include a supply stop appropriate located on the supply line.
- An in-line PRV installed on the supply line is recommended to ensure a working water pressure of 40 - 60 psi.
- Supply line must be flushed of all foreign materials such as pipe dope, chips, etc.
- Piping and valve must be drained prior to being subjected to freezing temperatures.

Prepare trench for water supply. At fountain location prepare hole to trench depth and large enough for a person to work in. Lay supply line into trench and above ground allowing extra line to be trimmed during hook up, refer to detail for roughs.

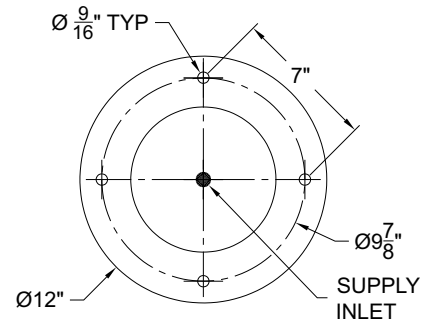
Refill trench and hole, compacting back fill as required. Leave sufficient depth in hole to accommodate concrete pour, 4" minimum recommended.

Prepare slab area surrounding fountain spreading and compacting gravel as necessary. Prepare form approximately 6" diameter to protect supply stub outs. Protect exposed valve assembly, tubing and tube openings to prevent damage to equipment or to prevent tubes from becoming filled with soil or debris. Then pour concrete, ensure concrete is flat and level.

Once concrete has cured, drill 3/4" diameter by 2" deep holes following the pattern shown in the mounting base detail for the provided drop-in anchors. Using the anchor setting tool, hammer the provided drop-in anchors into the drilled holes. Align mounting points on the fountain to the mounting anchors in the concrete and secure fixture to the slab using the provided mounting hardware.

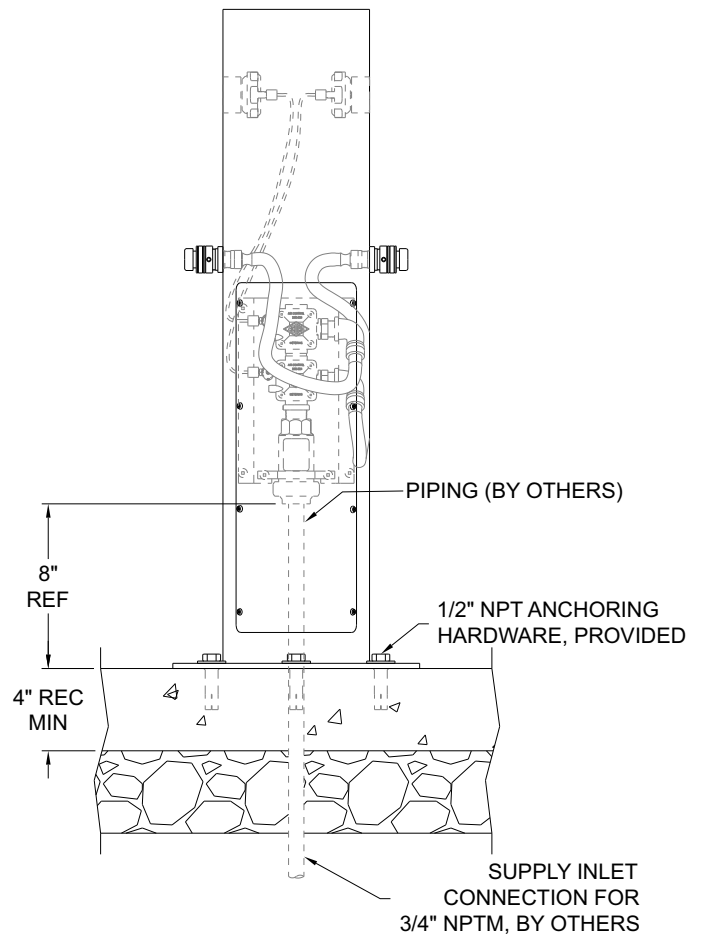
Through access panel make up connection to the fountain's 3/4" NPTM supply inlet.

To ensure plumb installation, lay a bubble level on fountain pedestal and adjust using shims or washers until the unit is level. To test operation of hose bibb, depress activation pushbutton and adjust flow rate as required and check all connections for leaks.



MOUNTING BASE DETAIL

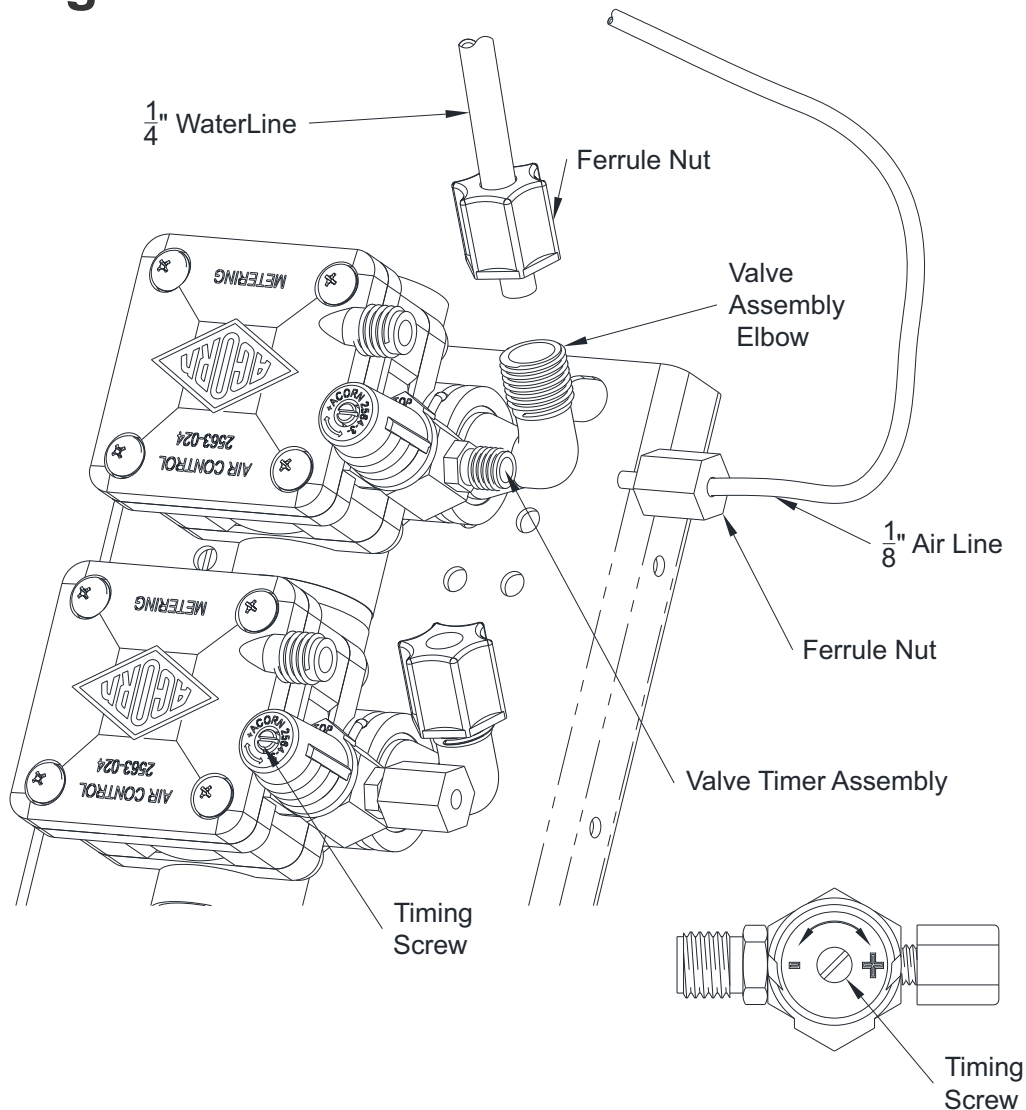
* HOSE BIBB NOT SHOWN FOR CLARITY



Please visit www.murdockmfg.com for most current specifications.

INSTALLATION INSTRUCTIONS FOR M-PM54 PET FOUNTAIN

Metering Valve



! IMPORTANT

Timing is adjustable from 5-60 Seconds and is accomplished by rotating Timing Screw. Turning the Screw Clockwise increases while Counterclockwise decreases.

Note: Maximum recommended working water pressure is 100 PSI; Maximum Water Temperature is 130° F; Maximum Outlet Temperature is recommended at 105°F.

Warning: Prior to making installation Supply Lines must be flushed of all foreign material such as Pipe Dope, Chips, Solder, ETC... Valve must be drained prior to being subject to Freezing Temperatures.

Please visit www.murdockmfg.com
for most current specifications.